

# Flip Feature Vector Users Guide

## Table of Contents

Introduction.....	3
Flip Feature Vector Overview.....	3
Display Information.....	4
Flip Feature Vector Troubleshooting.....	4
Error <i>PC-DMIS is not running</i> .....	4
Error <i>CoCreateInstance: Status 0x800702e4</i> .....	4
Error <i>CoCreateInstance: Status 0x80080005</i> .....	4
Revision History.....	6

# Flip Feature Vector Users Guide

## Introduction

The Flip Feature Vector program is a small utility that allows the user to flip the vectors of features inside a PC-DMIS program. The vectors can be the theoretical, target, or a combination of the two. Currently only Auto Vector and Auto Surface points are supported but other feature types will be added if the need arises.

## Flip Feature Vector Overview

The flip feature vector (FFV) program connects to an active PC-DMIS part program. Once connected a list of features found from the active part program is displayed in the feature list. Selected features can have either the theoretical, target, or a combination of the two vectors flipped.

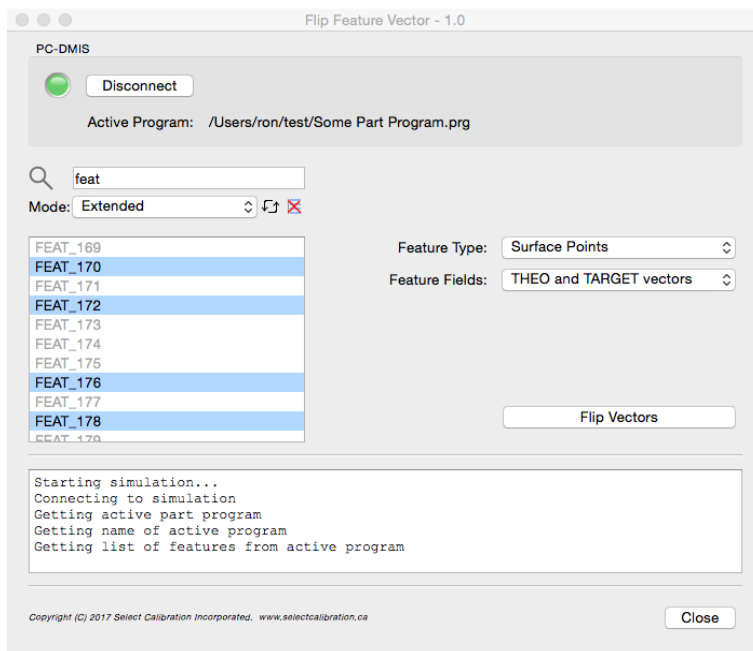


Illustration 1: The main window of the FFV utility program.



The list of features is partially filtered by the feature type selection. For example, if Auto Vector points is selected then only these features can be selected from the feature list. The entire program feature list is shown to provide reference data.

The options for the FFV program are listed below.

Option	Description
Connect / Disconnect	Connect to the active PC-DMIS part program. PC-DMIS must be running with the target part program loaded.
Active Part Program	The internal name of the active PC-DMIS part program

## Flip Feature Vector Users Guide

---

<i>Option</i>	<i>Description</i>
Search	Entering the first part of the name of a feature will automatically select all matching features.
Mode	The selection mode can be changed for the feature list. The default mode is Extended. The Multi-Select is an alternate option for selection of items in the list where items can be added or removed by a single left mouse click.
Refresh 	Re-load the list of features from the active PC-DMIS part program.
Clear Selection 	Unselect all items from the feature list.
Feature Type	Type of feature that can be selected from the list. Currently only Auto Feature Vector and Auto Feature Surface points are supported.
Feature Fields	The fields that are updated. This can be the theoretical, target or a combination of these two vectors.
Flip Vectors	Perform the vector flip for all selected features.
Close	Close the FFV program.

### Display Information

The log window at the bottom of the program provides feedback and error messages as the program is running. The status LED provides quick feedback if problems exist where green normal, red indicates an error, and flashing yellow means a long process is currently in process.

### Flip Feature Vector Troubleshooting

There are a few situations that may be encountered when running the FFV program:

#### *Error PC-DMIS is not running*

In order to access the events PC-DMIS must be running first. This is necessary so that the proper version can be identified and used.

#### *Error CoCreateInstance: Status 0x800702e4*

If PC-DMIS is running with administrative privileges then FFV must also run with the same elevated permissions. If the privileges are mismatched then this error is reported. The complete description of this error from Windows is *The Requested Operation Requires Elevation*.

#### *Error CoCreateInstance: Status 0x80080005*

If PC-DMIS is running with user privileges then it may not be accessible by other users depending on the security policy. This error will take up to 120 seconds to be returned to the program.

An example of a server error as reported on Windows 7 x64 event logs:

# Flip Feature Vector Users Guide

---

## Event Log:

Unable to start a DCOM Server: {ECA6CD05-7A02-480D-9B75-E6C5680B215D}. The error:  
"740"

Happened while starting this command:

C:\Program Files (x86)\WAI\PC-DMIS 2012 MR1\PCDLRN.exe -Embedding

## There are two solutions to this:

1. Run both PC-DMIS and FFV with administrator privileges.
2. Change the DCOM permissions of the PC-DMIS Automation Server to allow users to access the software. This is set through the *Windows Component Services* section of the control panel. Essentially this software is configured to not allow other users to access it.

# Flip Feature Vector Users Guide

---

## Revision History

<i>Date</i>	<i>Version</i>	<i>Changes</i>
May 18, 2017	1.0	New Program